



Walk Kohnenhof 4km

This is an adventurous hike with a sometimes challenging course and requires solid walking shoes. It is also recommended to wear long pants and eventually a T-shirt with long sleeves. This hike is suitable for anyone who enjoys a little challenge. Keep dogs on a leash, this to both your animal and the animals you may encounter in nature not be frightened.

**Note: Be careful at all times and watch your step! But most of all enjoy the beautiful environment and stunning views.*

**Tip for the “Early Birds”: venture out on this hike just before or at daybreak.
Have fun!*

The walk starts at the exit of the park. Go left here.

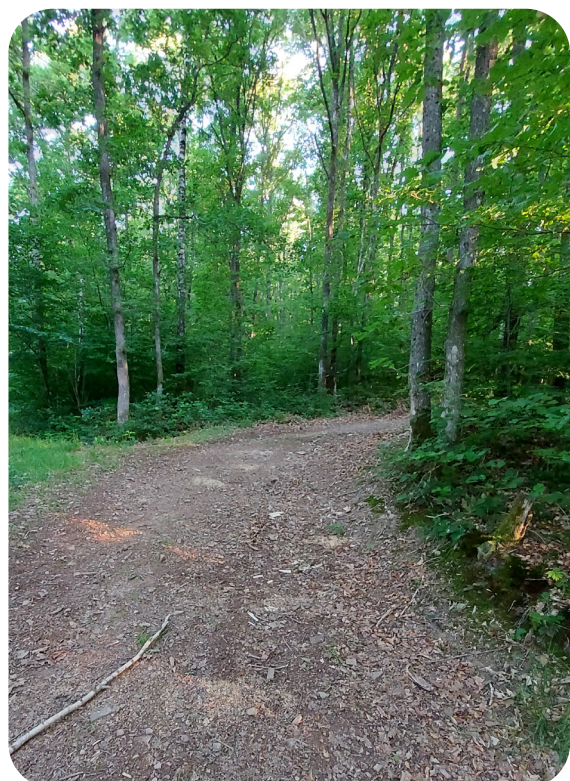


After 300m you will come to a hiking track on your right that goes uphill, this is indicated by an arrow. The path becomes a little bit more rough, keep the stream always on your left side and follow the path uphill.



After 700m the road will turn right, keep following the hiking trail PH4.

The road will turn right again after about 800m, you are still in the forest on trail PH4.



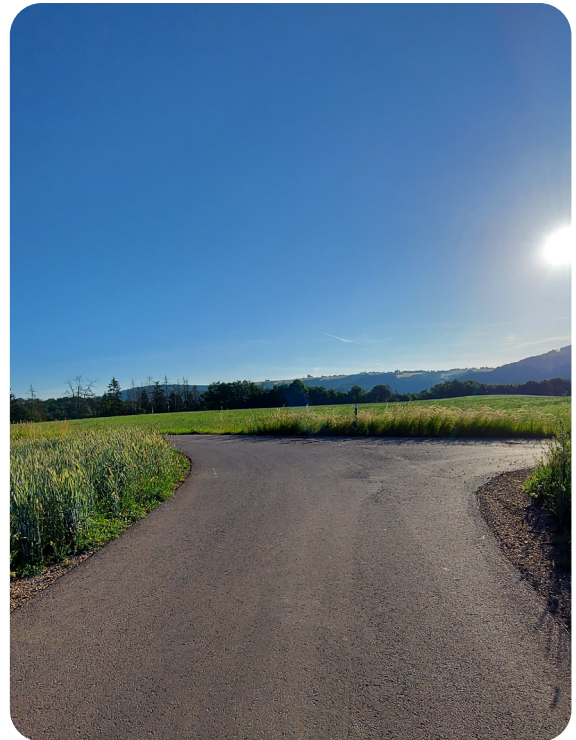
About 100 meters after the last turn, you will come out at a T-crossing and you will see an asphalt road, turn right here.



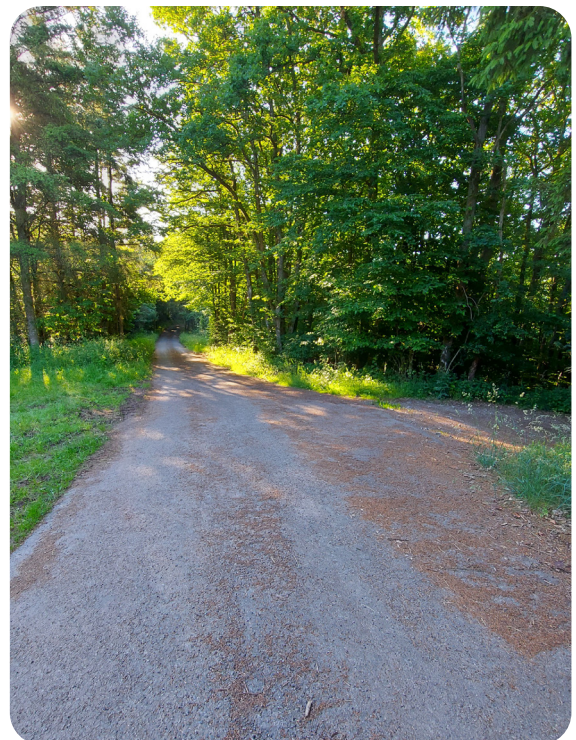
Did you know that Kohnenhof has its own electricity pole? Can you find it?



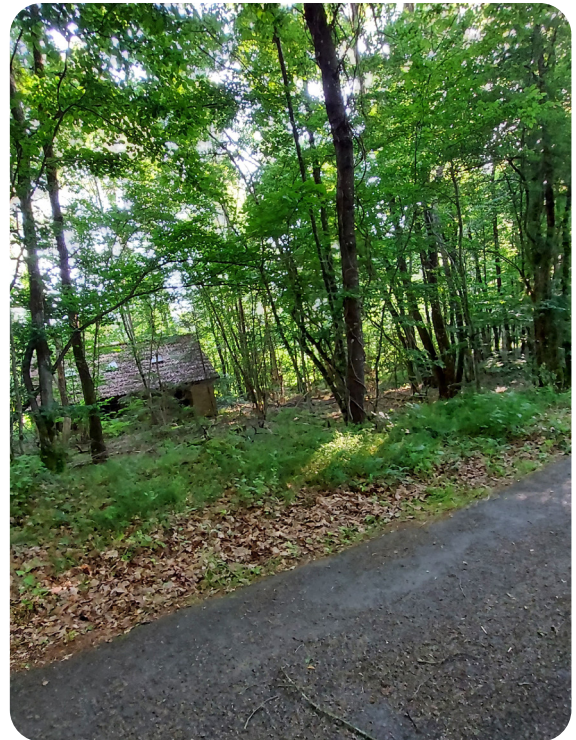
If you continue to follow the asphalt road for 200m you will again come to a T-crossing. Turn right here and keep following the asphalt road, which will turn into an agricultural road.



On the farm road, you'll encounter a side path on your right. Would you like to go "off road" for a while? Then take this side path and enjoy a beautiful landscape view. You will have to return to the agricultural road to continue the hike.



Go straight ahead on the agricultural road, so after a few meters you will discover an old farm on your left.



Keep following the path, which is now downhill. At the end of this path you will come to a highway. Turn right here, this is the road that leads back to the parc. Be careful because there is no pedestrian or cycling lane. After a few hundred meters you will see the restaurant Am'Our and the entrance to the parc on your left.

**Tip: walk on the left side of the road. In this way you can see the traffic coming from the opposite direction.*

